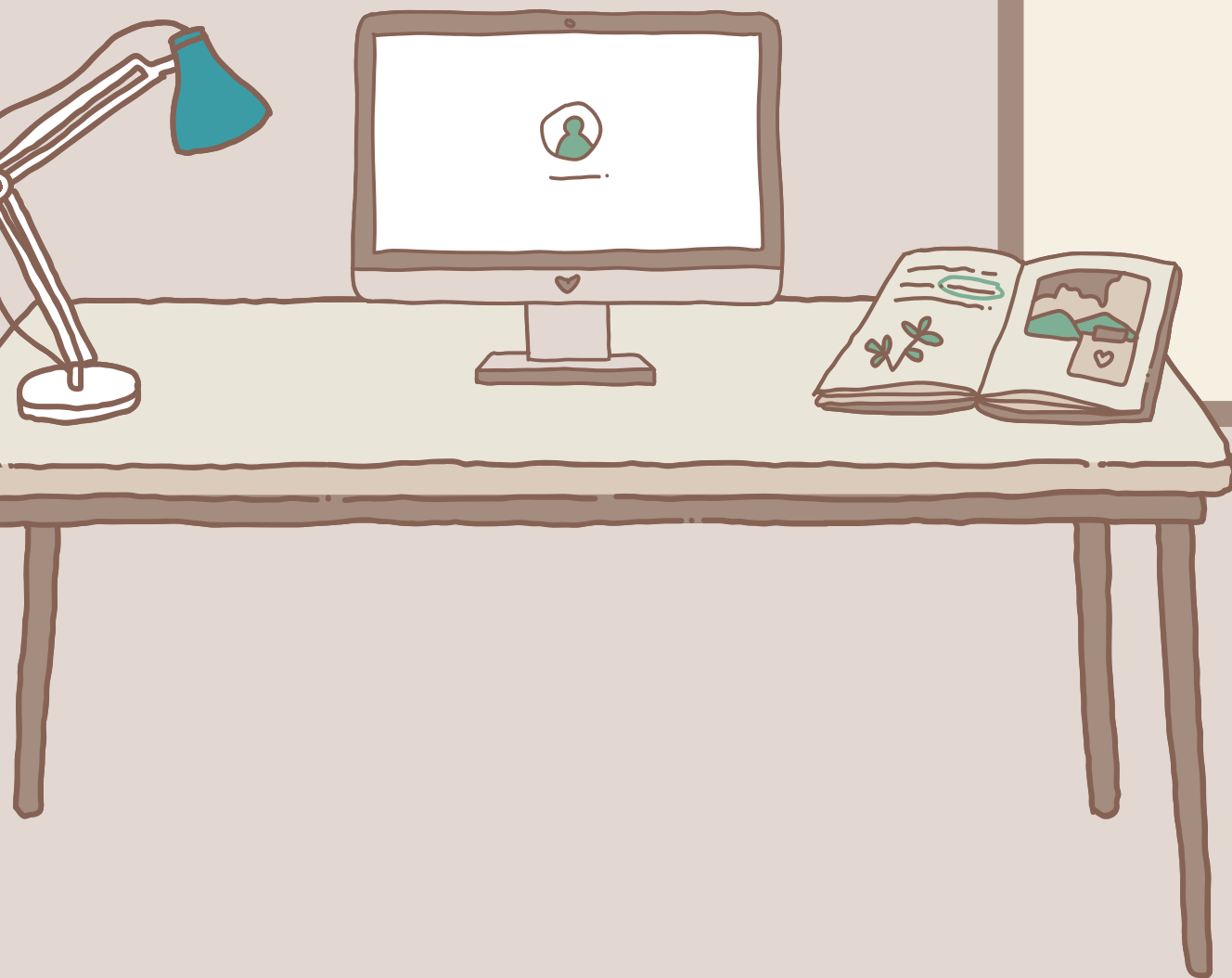


Webutuck SPECIAL EDUCATION 2023-2024



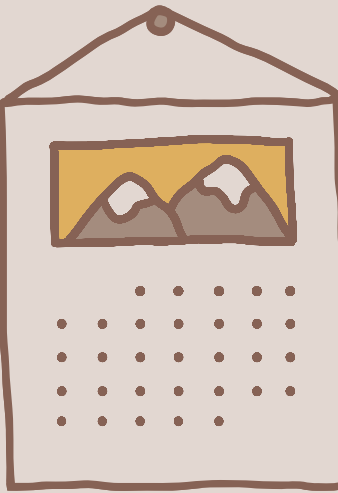
Edited 3/19/24 by Tammy Nethercott

LEAST RESTRICTIVE ENVIRONMENT (LRE)

LRE means that placement of students with disabilities in special classes, separate schools or other removal from the regular educational environment occurs only when the nature or severity of the disability is such that, even with the use of supplementary aids and services, education cannot be satisfactorily achieved. The placement of an individual student with a disability in the LRE must:

- provide the special education needed by the student;
- provide for education of the student to the maximum extent appropriate to the needs of the student with other students who do not have disabilities ; and
- be as close as possible to the student's home.

CONTINUUM OF SERVICES



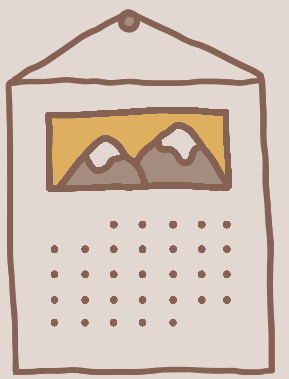
Federal Regulations

resource room
consultant teach direct and indirect
integrated coteach
special class-class specific
special class/self contained

Webutuck Offers

study skills (district support)
consultant teach-direct/indirect
integrated coteach
special class (reading and/or math)
special class (self contained)

ICT VS CT DEFINED



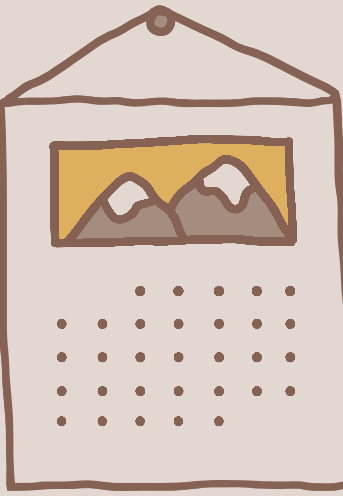
Integrated Coteach (ICT)

The special education teacher and general education teacher plan and teach together to support all students in the classroom. There are many coteaching models but there is never a time when one teacher only works with students with disabilities- rather, the preference is heterogeneous grouping. A maximum of 12 students with disabilities can be in the classroom and the number of non-disabled students should be more than or equal to the number of students with disabilities.

Consultant Teach (CT)

The special education teacher works only with students who have Consultant Teacher for that subject on their IEP within the classroom setting. They consult with the general education teacher to accommodate the lesson to meet the needs listed on each student's IEP. The CT does not teach with the general education teacher nor are they expected to support students without IEPs. Students only leave the classroom for testing accommodations (if stated on the IEP) but never for instruction.
Minimum of 2 hours/week

DEFINITIONS CONTINUED



Study Skills-Small group support from a special education teacher for organizational skills, classwork, test prep, and reteaching.

Special Class-(reading and/or math)-for those students who are significantly below grade level, and even with accommodations and modifications cannot access the curriculum. Special class is in lieu general education instruction.

Self Contained-for those students who have more global deficits, including severe cognitive, behavioral, or academic needs.



STUDENT NUMBERS IN DISTRICT

Total Student Population K-12

652

Students with IEPs

132

Percentage of Students with IEPs

20%

TOTAL NUMBER OF STUDENTS WITH IEPs WITHIN DISTRICT



Building	Number of Students
WES	48
EBIS	55
WHS	29
Total	132

TOTAL NUMBER OF STUDENTS WITH IEPs IN AND OF OUT DISTRICT



Building	Number of Students
WES	48
EBIS	55
WHS	29
Out of District	22
total	154

OUT OF DISTRICT STUDENTS



9 at DC BOCES, 1 at Red Hook

Number	Locations
10	DC BOCES*
4	UC BOCES
1	Westchester Exceptional
2	Spectrum Services
2	Green Chimneys
1	Cardinal Hayes
2	Pine Plains, Rhinebeck
4	Awaiting/Pending/Other

WES BREAKDOWN



Grade	Number of Students
Prek	8
Kdg	11
1st	9
2nd	9
3rd	10
self-contained	9
total	48 K-3 56 Total PreK-12

EBIS BREAKDOWN



Grade	Number of Students
4	9
5	11
6	15
7	6
8	11
self-contained	3
total	55

WHS BREAKDOWN



Grade	Number of Students
9	10
10	8
11	8
12	3
total	29

CURRENT SPED TEACHERS PER BUILDING



Building	Sped teachers
WES	4.5
EBIS	6.5
WHS	3.5
EBIS plus	Reading Teacher
WHS plus	Math Teacher
EBIS/WHS	MS shared w HS

- one gen ed math teacher w/sped cert teaches one period of sped math
- two EBIS teachers teach one class each at WHS
- our EBIS reading teacher teaches classes of special class reading at EBIS

SELF CONTAINED

CURRENT:

GRADES 1-3 12:1:1 9 STUDENTS

GRADES 6-8 8:1:1 3 STUDENTS

PROPOSED:

GRADES 1-3 TBD

GRADES 4-6 TBD

GRADES 7-8 TBD

SPECIAL CLASS READING



Grades	Number of Students
Grade 1	2
Grade 2	3
Grade 3	7
Grade 4	3
Grade 5	7
Grade 6	6

SPECIAL CLASS MATH



Grades	Number of Students
Grade 1	0
Grade 2	0
Grade 3	1
Grade 4	4
Grade 5	3
Grade 6	9



CPSE

Committee of Preschool Special Education

Dutchess County provides the services.

Total Number of Students:

Speech - 20

Occupational Therapy (OT) - 10

Physical Therapy (PT) - 2

Special Education Itinerant Services (SEIT) - 5
(Special Education Teacher)

WES PRE-K

Speech - 8

OT - 3

SEIT - 5

OTHER

In programs such as Astor of
Beacon and Astor of Poughkeepsie





WES

Self Contained
Grades 1-3....9
students

Coteach Student Numbers

- Kindergarten.....7
- 1st.....5
- 2nd.....7
- 3rd.....10

Special Class Reading

Special Class Math

- | | | |
|-------|---|---|
| • 1st | 2 | 0 |
| • 2nd | 3 | 0 |
| • 3rd | 7 | 1 |

EBIS

GRADES 4-6

Self Contained
Grades 5/6
3 students



Coteach Student Numbers

- 4th.....9 students
- 5th.....7 students
- 6th.....8 students

Special Class
Reading

Speical Class
Math

Study Skills

• 4th	3	4	9
• 5th	7	3	4
• 6th	6	9	11

EBIS

GRADES 7-8

Consultant Teach Numbers

- 7th.....5 students
- 8th.....11 students



Special Class Reading

Speical Class Math

Study Skills

- | | | | |
|-------|---|---|----|
| • 7th | 0 | 0 | 7 |
| • 8th | 0 | 0 | 11 |

WHS

CAREER DEVELOPMENT AND OCCUPATIONAL STUDIES (CDOS)

Number of Students:

9th.....3
10th.....2
11th.....3
12th.....4



CT ELA

CT Math

SC ELA

SC Math

Study Skills

9th	7	4	3	3	8
10th	4	5	4	2	9
11th	5	2	4	0	5
12th	0	0	2	0	3

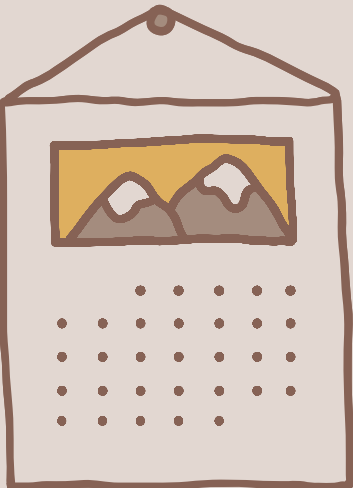
WORK BASED LEARNING (STUDENTS WITH IEPs)

- Classroom 3 periods per day-ex. job searches, resume writing, taxes
- Regents diploma with CDOS Credential (Career Development and Occupational Studies)
- On-campus work opportunities-ex. technology, early childhood, food services, bus garage, custodial, etc.
- Off-campus work opportunities-Troutbeck, Silo Ridge, Herringtons, and more
- Employment opportunities continue to develop and grow



SUPPORT SERVICES WITHIN DISTRICT

Counseling



WES	IEP	28
WES	504	7
EBIS	IEP	32
EBIS	504	7
WHS	IEP	17
WHS	504	3

All buildings informal as needed

Speech

WES	
IEP Students	37
Without IEPs	25
EBIS/WHS	
IEP Students	41
Without IEPs	6

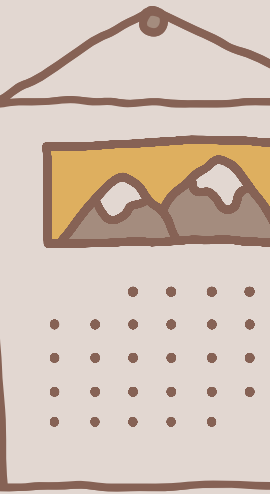
SERVICES CONT

Occupational Therapy

WES 30
EBIS 6
WHS 1

Physical Therapy

WES 5
EBIS 7
WHS 0



SERVICE PROVIDERS



3 Social Workers

3 Speech Pathologists

3 School Counselors

1 Psychologist

1 Occupational Therapist-contracted out-5
days per week

1 Physical Therapist-contracted out for 1 day



Questions?



Thank You



tammy Nethercott
8453734100 ext 5514
tammy.nethercott@webutuck.org

